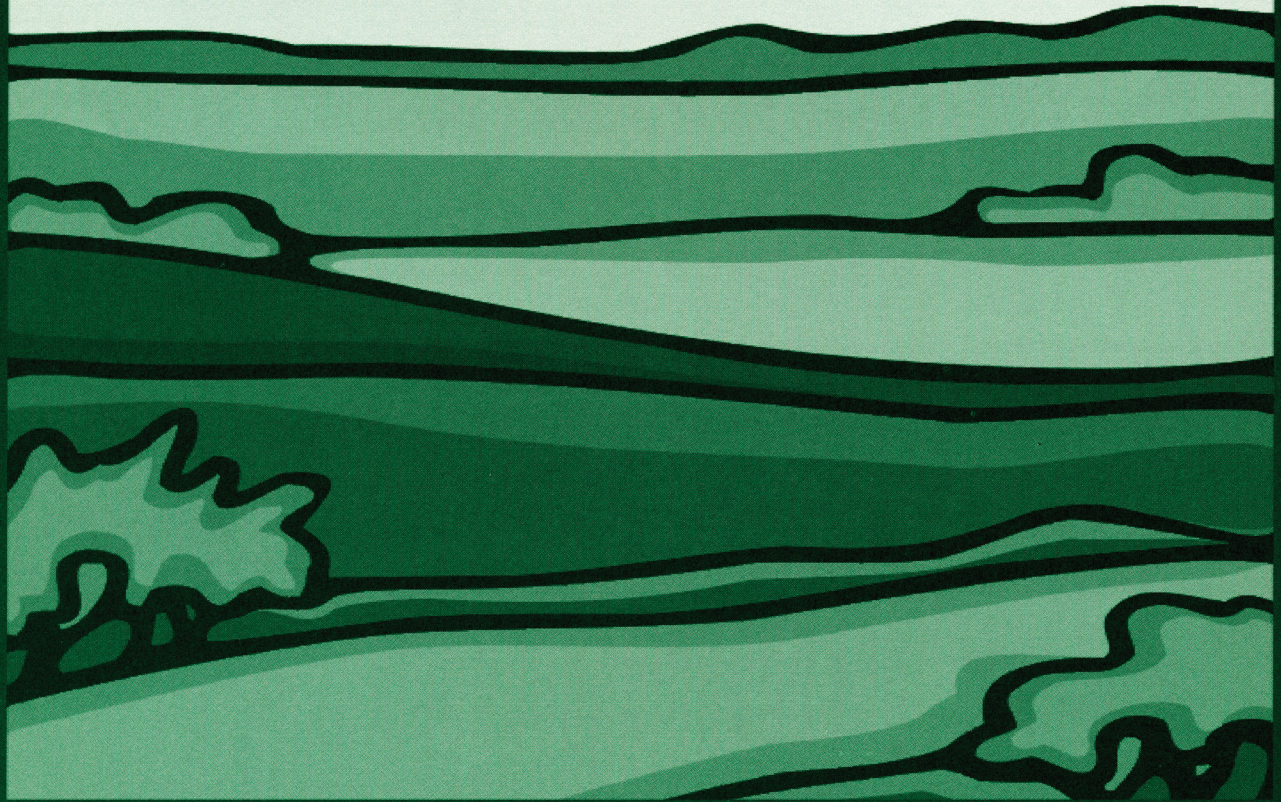
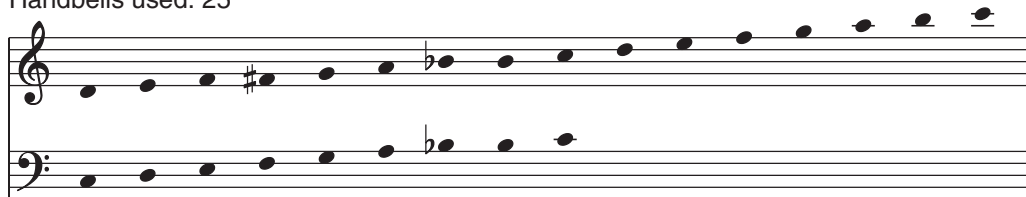


# The Lord's My Shepherd



# The Lord's My Shepherd

3 octaves  
Handbells used: 25



Chime Tree or Wind Chimes (optional)

Musical score for 'Chime Tree or Wind Chimes (optional)'. The score is written for piano and includes a woodwind part. The woodwind part features a trill (tr) starting at measure 9 and ending at measure 12, and another trill starting at measure 17 and ending at measure 20. The piano part is divided into four systems of four measures each. Measure numbers 9 through 24 are indicated above the piano staves. The piano part includes dynamic markings such as *mp* and *cresc.*, and articulation marks like accents and slurs. The woodwind part is shown on a single staff with a treble clef and a key signature of one flat. The piano part uses a grand staff with treble and bass clefs. The woodwind part has a trill in measures 9-12 and 17-20. The piano part has various rhythmic patterns and dynamics.

25 26 27 28

29 30 31 32

33 34 35 36

37 38 39 40

41 R 42 43 44 45

41 R 42 43 44 45

*f* *mf*

Detailed description: This system contains measures 41 through 45. Measure 41 has a dynamic marking of *f* and a fermata over the first note. Measure 42 has a dynamic marking of *f*. Measure 43 has a dynamic marking of *f*. Measure 44 has a dynamic marking of *mf*. Measure 45 has a dynamic marking of *mf*. The music is in a grand staff with treble and bass clefs. There are various chordal textures and melodic lines in both hands.

46 47 48 49

46 47 48 49

*mp*

Detailed description: This system contains measures 46 through 49. Measure 46 has a dynamic marking of *mp*. Measure 47 has a dynamic marking of *mp*. Measure 48 has a dynamic marking of *mp*. Measure 49 has a dynamic marking of *mp*. The music continues with various chordal textures and melodic lines in both hands.

50 *tr* *poco rit.* *a tempo*

50 51 52 53

*poco rit.* *a tempo*

Detailed description: This system contains measures 50 through 53. Measure 50 has a dynamic marking of *poco rit.* and a trill (*tr*) over the first note. Measure 51 has a dynamic marking of *a tempo*. Measure 52 has a dynamic marking of *a tempo*. Measure 53 has a dynamic marking of *a tempo*. The music continues with various chordal textures and melodic lines in both hands.

54 55 56 57 LV R LV

54 55 56 57 LV R LV

*mf* *f*

Detailed description: This system contains measures 54 through 57. Measure 54 has a dynamic marking of *mf*. Measure 55 has a dynamic marking of *mf*. Measure 56 has a dynamic marking of *f*. Measure 57 has a dynamic marking of *f*. The music continues with various chordal textures and melodic lines in both hands.