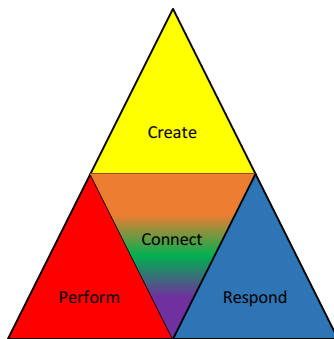


Mary Had a Little Lamb

Mary Had a Little Lamb is an English language nursery rhyme of nineteenth-century American origin.

National Standards



Objectives

1. Students will sing a familiar song.
2. By using a familiar tune, students can use icons to develop eye-hand coordination to successfully ring the melody on handchimes.
3. Through process, students will become music literate.
4. Students will practice keeping a steady beat.
5. Students will learn to collaborate.

Process

Stage 1

1. Begin by reviewing the text and melody of the song.
2. The icon chart may be presented through a computer-generated slideshow presentation or interactive whiteboard.
3. Begin by assigning instruments to students – one chime per student.
4. Instruments may be rung in octaves to involve more students.
5. Associate the symbol or color with each chime. Rubber bands may be used to color-code a handchime.
6. Begin by tracking through the chart for students to follow along ringing when they see their symbol/color appears on the appropriate beat.
7. Students who are not playing the melody should be encouraged to keep a steady beat on rhythm instruments and later, create complementing rhythmic patterns.

8. Once the melody is mastered on the instruments, students may sing along.

Stage 2

1. Once the melody is mastered using icons, the Chroma-Note score may be presented through a computer-generated slideshow presentation or interactive whiteboard.
2. Associate the colored note with the appropriate rubber band on each chime or the appropriate pitch location found on the nomenclature label of the handchime.
3. Lead students through the score by tracking the color or pitch.
4. Students who are not playing the melody should be encouraged to keep a steady beat on rhythm instruments.
5. Once the melody is mastered on the instruments, students may sing along.

Stage 3

1. A full handchime score for 3 octaves of handchimes is included for the students to follow. It may be presented through a computer-generated slideshow presentation or interactive whiteboard.
2. A handchime should be assigned to each student.
3. The students can associate the pitch notated on the designation label of the handchime.
4. Lead students through the score by tracking the color or pitch. Students who are not playing the melody should be encouraged to keep a steady beat on rhythm instruments.
5. Once the melody is mastered on the instruments, students may sing along.

Notes

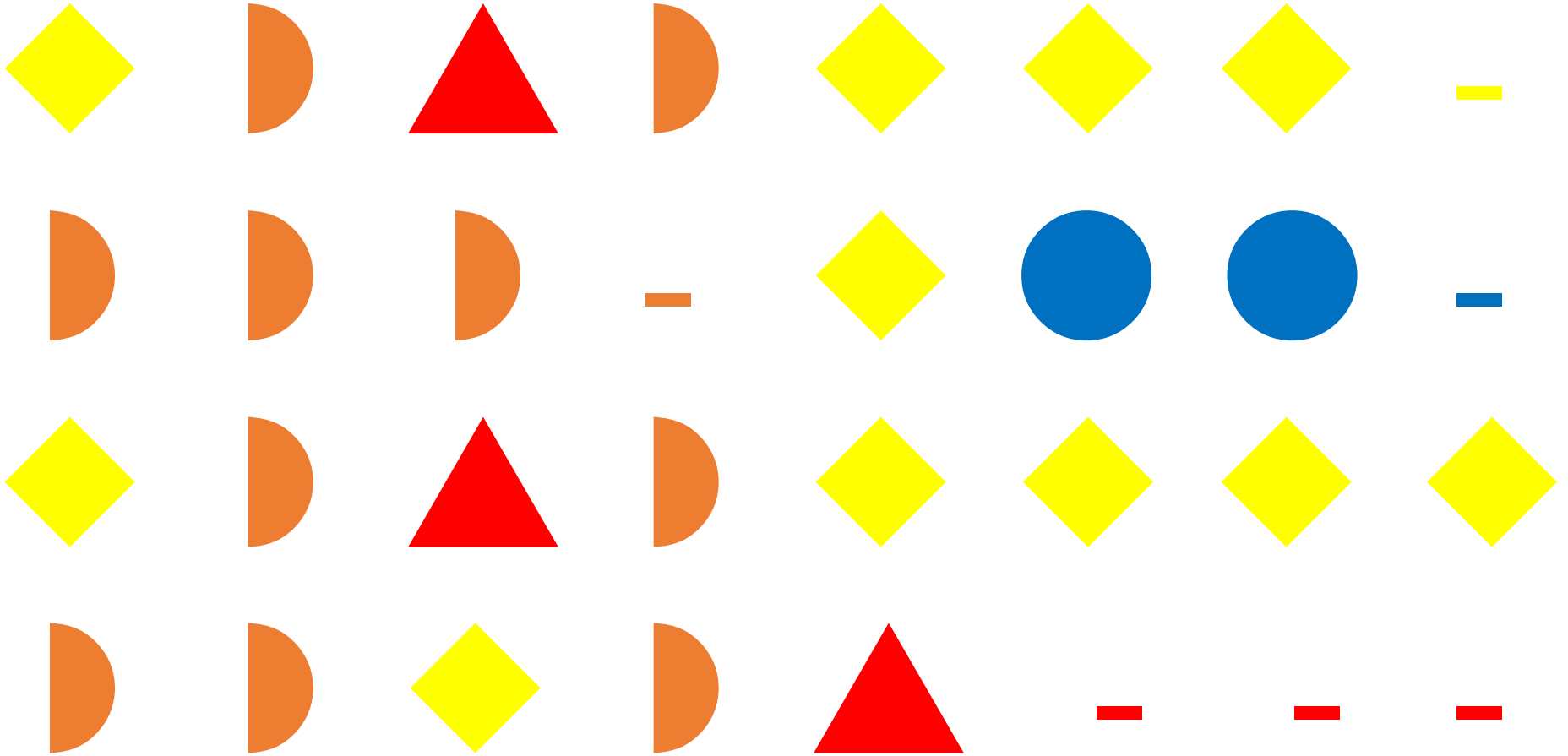
Mary Had a Little Lamb

Traditional Nursery Rhyme

1. Ma - ry had a lit - tle lamb, lit - tle lamb, lit - tle lamb,
2. Ev - 'ry where that Ma - ry went, Ma - ry went, Ma - ry went,

5
Ma - ry had a lit - tle lamb it's fleece was white as snow.
Ev - 'ry where that Ma - ry went, the lamb was sure to go.

The musical notation consists of two staves in 4/4 time. The first staff contains measures 1 through 4, and the second staff contains measures 5 through 8. The melody is simple, using quarter and eighth notes. The lyrics are aligned with the notes, with some words spanning across measures.



Mary Had a Little Lamb

1 octave

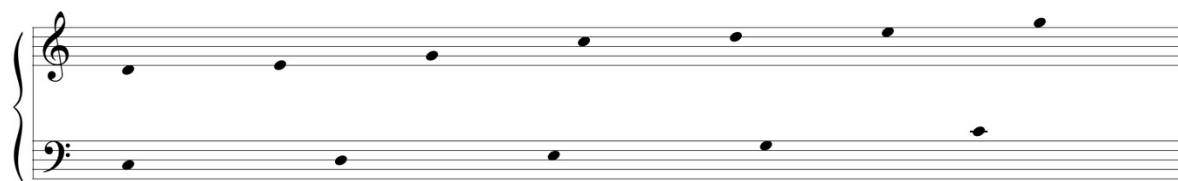
Handchimes used: 4

The image shows the musical notation for the song 'Mary Had a Little Lamb' on a handchime. It consists of three staves. The first staff shows the pitch range with four colored dots: red (bottom), orange, yellow, and blue (top). The second staff is the first line of music, starting with a treble clef and a 4/4 time signature. It contains 12 measures, with measures 2, 3, and 4 labeled above. The notes are: G4 (yellow), F4 (orange), E4 (red), D4 (orange), C4 (yellow), B3 (yellow), A3 (yellow), G3 (yellow), F3 (orange), E3 (orange), D3 (orange), C3 (yellow). The third staff is the second line of music, starting with a treble clef and containing 8 measures, with measures 6, 7, and 8 labeled above. The notes are: B3 (yellow), A3 (orange), G3 (red), F3 (orange), E3 (yellow), D3 (yellow), C3 (yellow), B2 (yellow), A2 (orange), G2 (orange), F2 (yellow), E2 (orange), D2 (red).

Mary Had A Little Lamb

2 or 3 octaves

Handchimes used: 8, (12)



optional

2 octave choirs omit notes in ().

